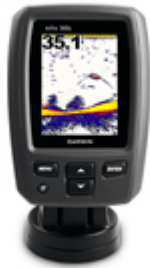




echo™ 300c



Part Number: 010-00952-00

- **Overview**
- **Features**
- **Specs**
- **In the Box**

echo 300c is the only color, dual-beam fishfinder on the market at this price, making it the premier sonar option for fishermen on a budget.

See What Lies Below

echo 300c is designed to make catching fish a cinch. It's just that simple. The system's 3.5 in sunlight-readable display and exclusive Garmin HD-ID™ target tracking technology let you see through the water like never before. Plus, a 300-watt (RMS) sounder offers a viewing angle of up to 120 degrees and bottom detail to 1,500 ft.

For an uninterrupted view of the sonar image, echo 300c also boasts Garmin Smooth Scaling™ technology, which means you won't lose sight of the sonar history as the unit changes depth ranges.

Mount & Go

Designed with simplicity in mind, echo 300c is one most intuitive fishfinders on the market. Installation takes only a few minutes using the quick-release tilt mount and versatile transom-mount transducer included in the box.

echo 300c features:

- Garmin HD-ID™ technology
- 300 watts (RMS) transmit power
- Depths to 1,500 ft
- Beam width to 120 degrees
- 3.5 in sunlight-readable color display
- Tilt/swivel mount, transducer, trolling motor clamp and transom mount

Physical & Performance:	
Unit dimensions, WxHxD:	4.1" x 5.8" x 2.8" (10.4 x 14.7 x 7.1 cm)
Display size, WxH:	2.1" x 2.8" (5.3 x 7.1 cm); 3.5" diag (8.9 cm diag)
Display resolution, WxH:	240 x 320 pixels
Display type:	QVGA, 256 colors
Weight:	11.6 oz (330 g)
Waterproof:	yes (IPX7)
Features & Benefits:	
Audible alarms:	yes
Dual-frequency sonar capable:	yes
Dual-beam sonar capable :	yes
Split-screen zoom:	yes
Ultrascroll® (displays fish targets at higher boat speeds):	yes
Fish Symbol ID (helps identify fish targets):	yes
AutoGain Technology (minimizes clutter, maximizes targets):	yes
Whiteline (indicates hard or soft bottom):	no

Adjustable depth line (measures depth of underwater objects):	yes
A-scope (real time display of fish passing through transducer beam):	yes
Bottom lock (shows return from the bottom up):	yes
Water temperature log and graph:	yes
Water temperature sensor included:	yes
Water speed capable (displays speed on water):	yes
Other:	
Frequency:	200/77 kHz
Transmit power:	300W (RMS)/2,400W (peak to peak)
Voltage range:	10V - 28V input
Maximum depth:	1,500 ft freshwater*
Cone angle:	60° or 120° (dual beam)
Additional:	*Depth capacity is dependent on water bottom type and other water conditions.

What's in the Box:

- echo 300c
 - Quick release mount with tilt and swivel
 - Power cable
 - Transducer w/ mounting bracket, hardware and trolling motor clamp
 - Documentation
-