

Tramigo Case Study: With T22 Generators are untouchable

T22 Protects Generators Used For Emergency Power at Mobile Phone Operator Base Stations



Tramigo case file 62

Tramigo T22 for Generators

Date: March 2010

Country: Chile

Area: Coquimbo region

March 2010

Chile

Coquimbo region



-33.45945, -70.65176

Tramigo Case File 62 - Tramigo Case File 62 - Tramigo Case File 62 - Tramigo Case File 62 - Tramigo Case File 62 -

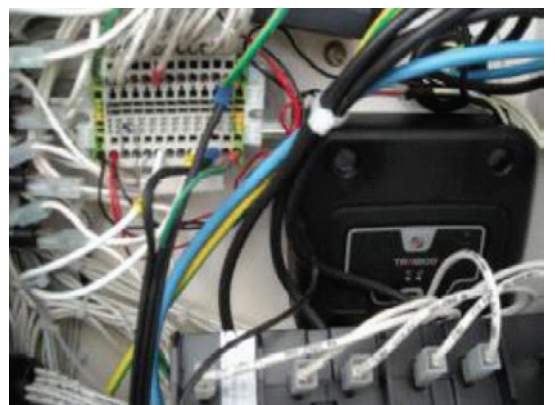
Theft of electric generators in mobile phone operator base stations is a major problem in Latin America in general, and especially in Chile. Mobile phone operator base stations are vital part of communications network and generator back-up power systems are added to base stations to provide emergency power and ensure that cellphone network stays operative even during blackouts. Tramigo Ltd's client in Chile had been looking for a solution to protect electric generators and reduce theft and damage done to generators.

Tramigo Ltd developed special settings in order to make T22 an infallible protection against this serious problem. Tramigo offers the possibility to configure T22 unit to use a sensor which recognizes if the generator door is opened. This prevents both theft and damage to any part of the generator. Just opening a door and T22 sends a signal indicating that the door has been touched or opened. All the generators have 1 Tramigo T22 unit fitted inside and configured to send an alert if the unit moves or door is opened.

This is one of the many innovative ways that Tramigo T22 devices can be used. There are already hundreds of different applications where client are trusting Tramigo products, ways of usage range from personal safety to



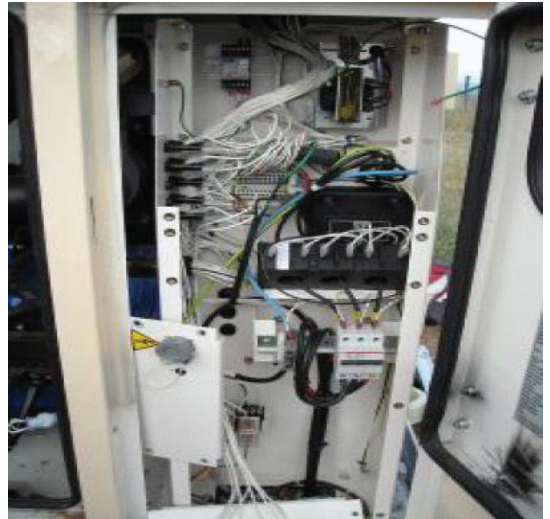
Cellphone base station is the most vital part of communications network



Tramigo T22 installed inside generator

protecting high value cargo containers and everything between. Don't hesitate to contact your local Tramigo sales department to find out how we will have a solution also for your need!

For more information about Tramigo T22 Series Tracking devices and accessories, visit www.tramigo.com



T22 device is configured to send an immediate alert if the door is opened

T22 Key Benefits for fixed asset protection:

- Motion-sensor sends alert directly to mobile phone or PC if movement is notified
- Possibility for remote listening around the target
- Catch the thieves in act!
- IO-port for external sensors
- No monthly monitoring or annual subscription fees
- Low cost to use, only SMS messages, none when unit is on standby.
- Easy installation can be installed to draw power from the vehicle battery.
- Sturdy construction with shockproof casing & full 24 month warranty.